

PRODUCT BRIEF

Digilant® Construction-Cam™

January 2014

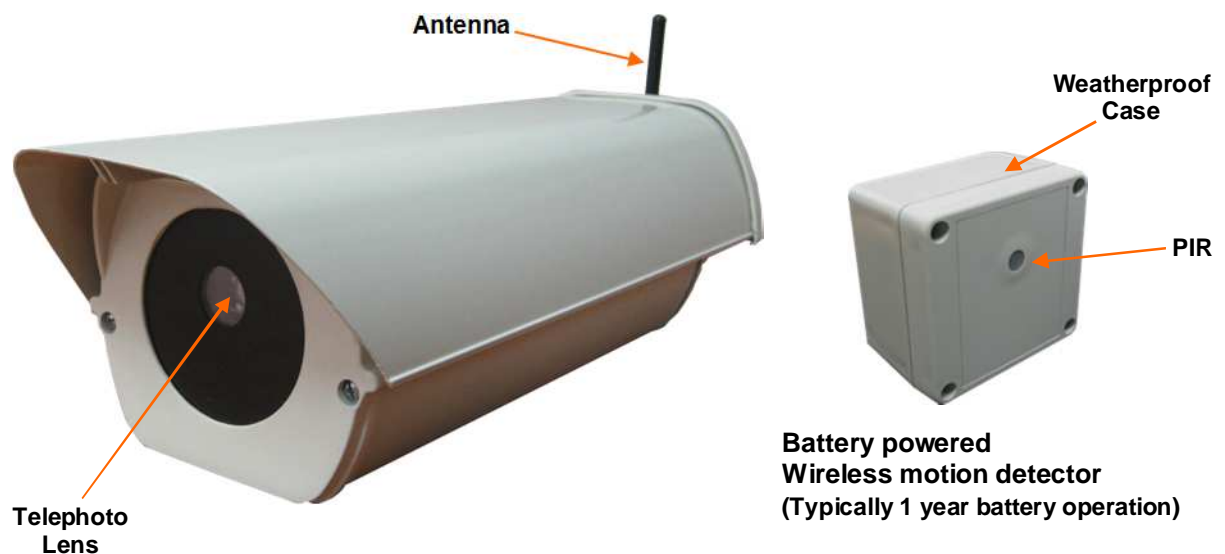
The Digilant® Construction-Cam™ is a 'wire free' image monitoring solution for construction and building sites. The camera is solar powered making it completely independent of external power and the captured images are sent via a 3G modem to a PC, mobile phone, monitoring station, & web based dashboard. The camera is also equipped with a Telephoto lens to enable the camera to be mounted out of reach or sight, and an optional battery powered wireless motion detector activates the camera from up to 80m away.

During daytime, the camera typically sends an image every ½ hour so the building supervisor can remotely monitor the site. Of an evening however when the site is secured, the wireless motion detectors are enabled so that any intruders will be photographed and the images sent back as Alerts to a monitoring station.

FEATURES

- Complete 'wire free' solution for remote image monitoring of Construction sites.
- Fully integrated solar-powered wireless activated digital camera with 3G modem.
- Images are sent immediately to mobile phone, PC, Monitoring Station, & web based Dashboard
- Images and alerts can be viewed on all smart phones and tablets for mobile access.
- Full control and configuration of the camera via SMS commands
- Battery operated wireless motion detectors activate the camera up to 80m away
- Solar powered white LED floodlights (20w, 30w & 50w) for colour night vision
- Optional B&W Camera with wireless IR spotlight for night vision
- Choice of 5 telephoto lenses to focus on specific areas of interest or identify intruders
- All images are concurrently stored on an internal removable 8GB SD card
- Camera, Solar Panel & LED light, all have adjustable mounting brackets with 'Quick Swap' feature
- Security mode enables wireless motion detectors only at night. If triggered, images of intruders are sent

CAMERA & ACCESSORIES



DAY TIME MONITORING – NIGHT TIME SECURITY

Wireless motion detectors are positioned around the periphery of the building site for night-time monitored security. If triggered, alarm images are sent to a monitoring station. During daytime, the detectors are disabled to prevent constant triggering by workers.



White LED floodlight for colour night vision



16 level Commercial



9 level Residential



3 level Residential



When completed, a movie can be made of the construction for marketing purposes

High-Rise Construction Site Monitoring



Balustrade Mounting



Safety Rail Mounting



SPECIFICATIONS

Image Type	Colour, JPEG compressed, VGA (640 x 480), QVGA (320 x 240)	
Internal Battery Capacity	12 VDC SLA (5Ah)	
Camera Telephoto Lens range	3mm, 4mm, 8mm, 16mm, 25mm	
RF Frequency	2G & 3G GPRS: 850/900/1800/1900/2100 MHz	WPIR: 2.4Ghz
Power Consumption (Av.)	Xmit: 300mA, Standby: 4.9mA	
Camera Case Dimensions	410 x 105 x 125 mm	
Weight	3 Kg (Including batteries)	
Solar Panel Rating	12VDC, 20W	
Operating Temperature	-20°C to +60°C	
PC Software Requirements	Windows 2000 (SP4), Windows XP (SP2), Windows Vista, Windows 7	

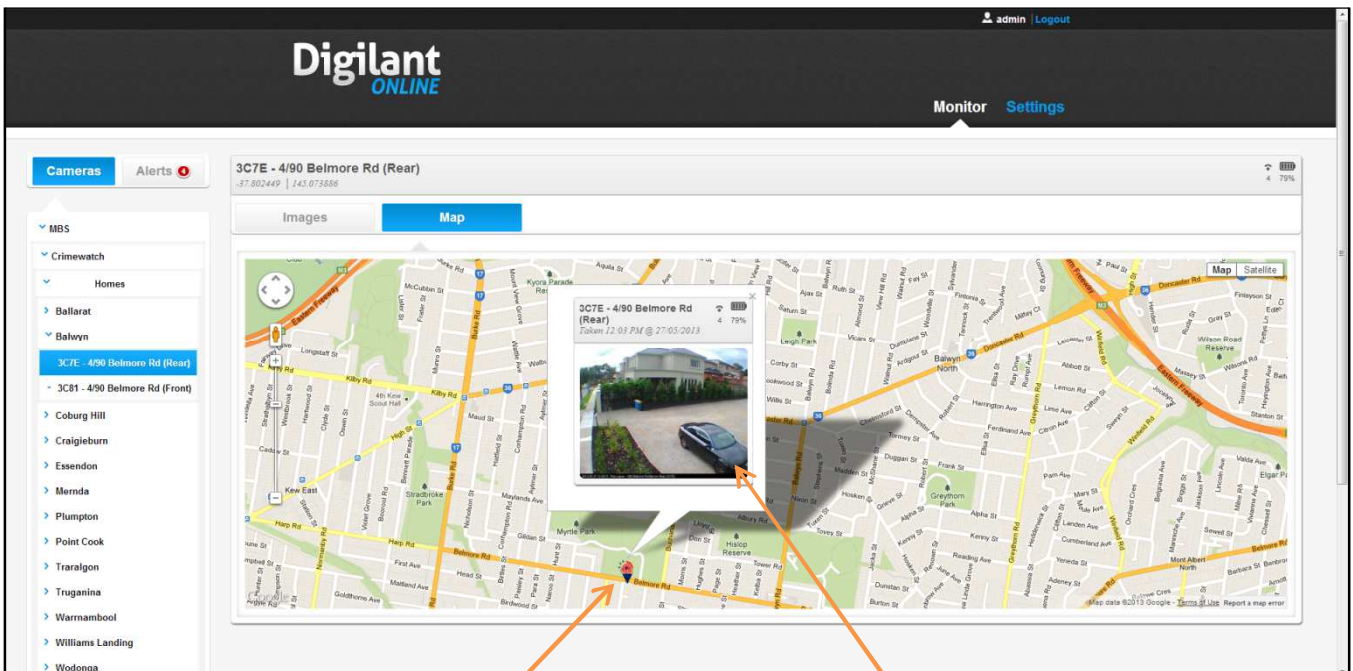
Declaration of Conformity

The RF transceiver module in this product conforms with **ETSI EN 300 440-1** and **FCC section 15.249**

WIRELESS TO WEB™ 'Alert' DASHBOARD

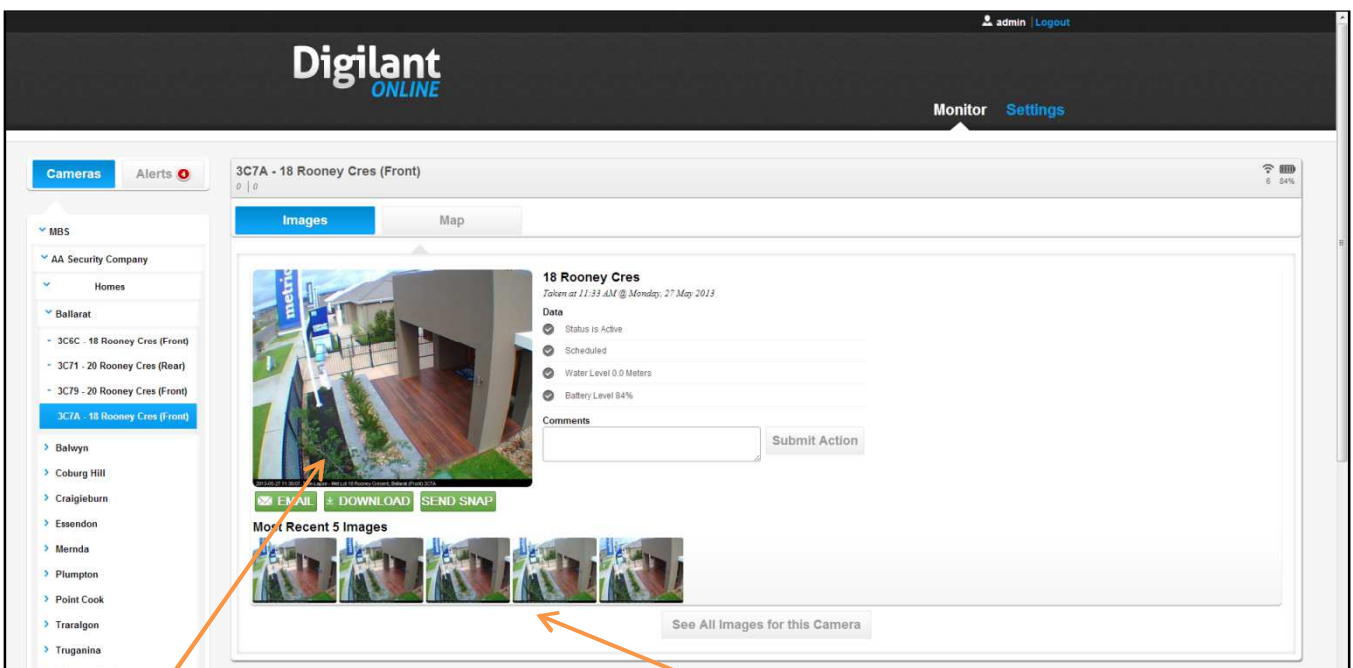
The 'Wireless To Web' (WTW) proprietary network is a fast, secure and reliable means of sending images from wireless cameras to the end user's PC, mobile phone, monitoring station, or Dashboard.

The WTW 'Alert' Dashboard enables images to be displayed in real time from multiple cameras on a reference map. Each camera is displayed as an icon and can be highlighted using the mouse and when selected, opens an image viewer to display real time and historical images. Any intrusions after hours are displayed as alerts which can be monitored by security companies. An Alert SMS can also be sent to the owner which contains the HTML link to the camera image.



Map showing camera positions as icons.

Latest Image



Real time viewer showing most recent image

5 most recent images